

ALERTMAXX2

WI-FI CONNECTION GUIDE



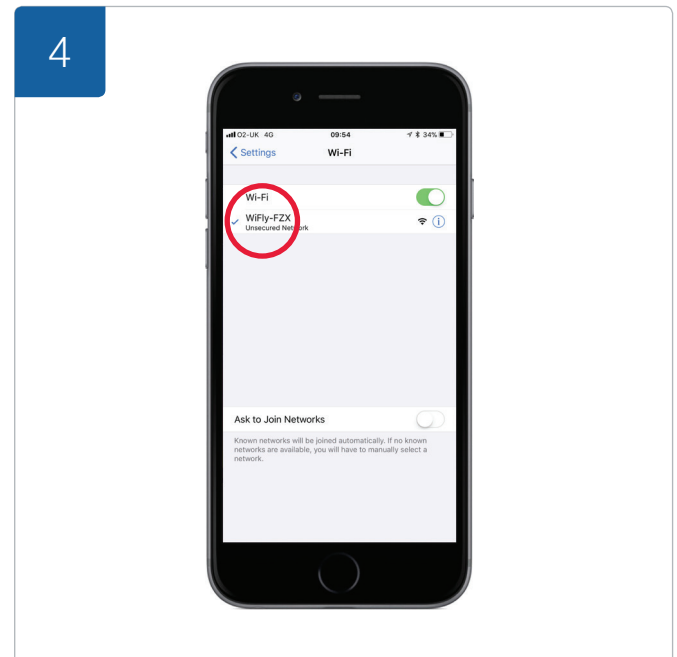
The AlertMaxx2 will show 'EC' when the unit has lost connection to the internet. Follow this guide if the Wi-Fi name, password or internet provider has changed.



Press and hold the 'FUNC' button until the screen displays U9. Upon release at 'U9', the AlertMaxx2 will display 'C0'



'C0' will automatically change to 'C1' to indicate the Wi-Fi configuration process has started.

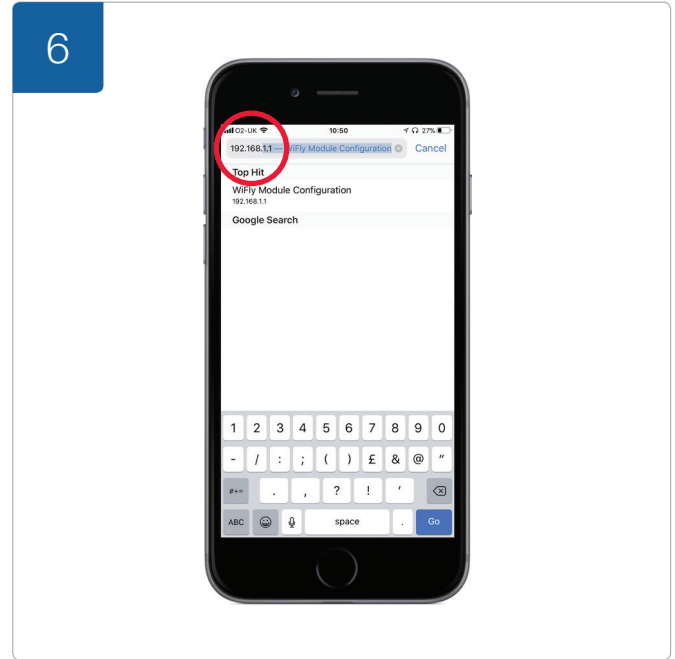


Using a Wi-Fi enabled device such as a mobile phone, open the Wi-Fi network search function and connect to 'WiFly-FZX'.

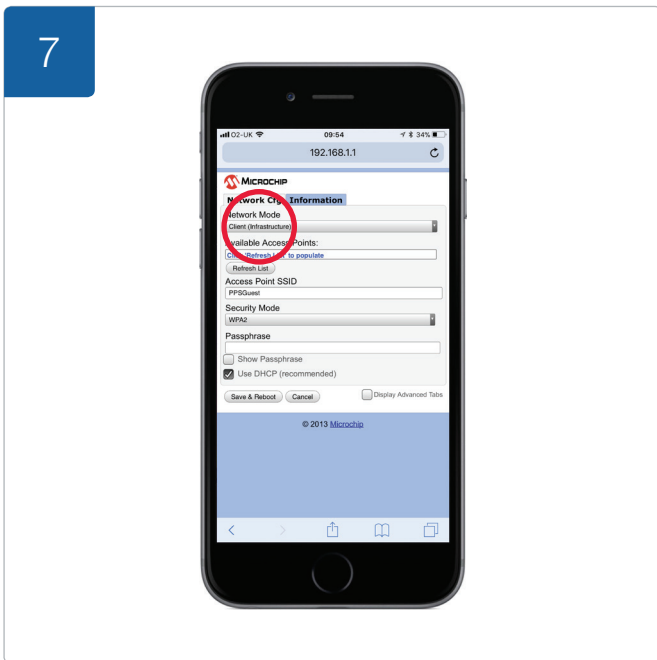
ALERTMAXX2 WI-FI CONNECTION GUIDE



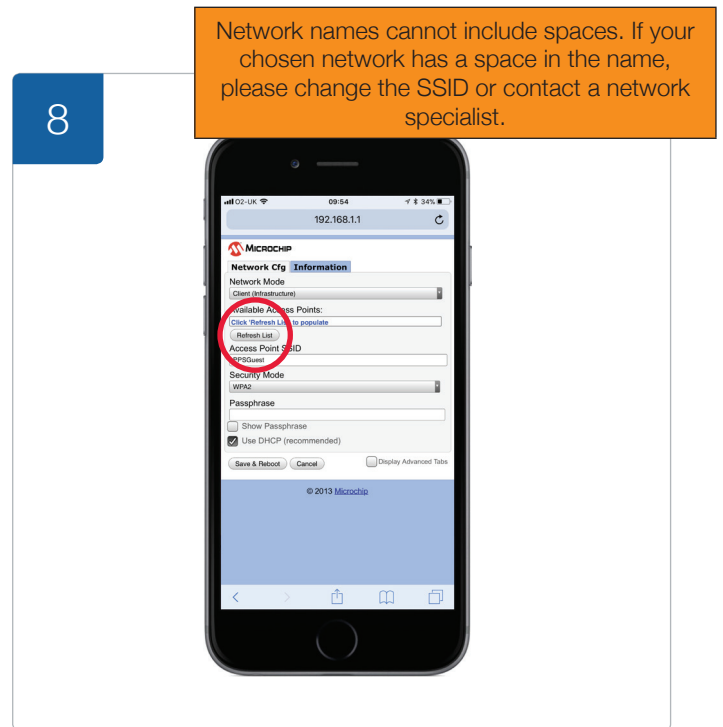
After connecting to WiFly, the AlertMaxx2 will show a 'C4' indicating you have successfully connected your device to the unit.



Open the web browser on your device and enter 192.168.1.1 into the address field and click go.

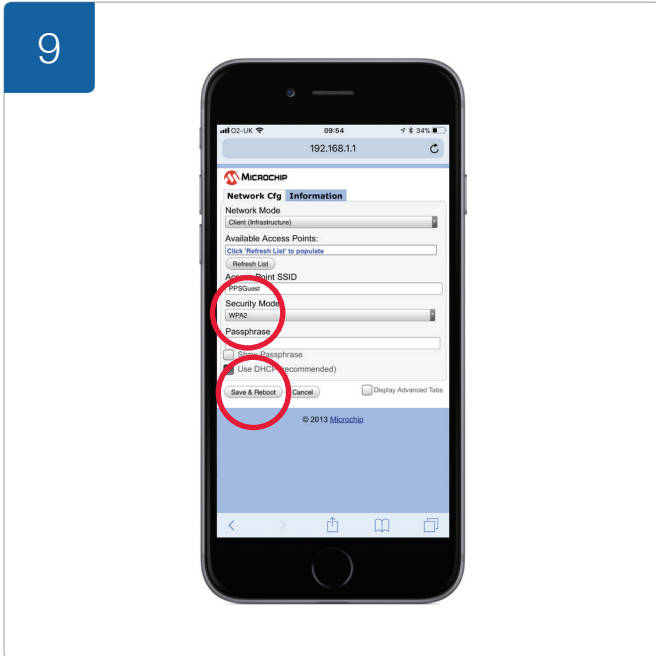


The Microchip screen will load. Ensure that the network mode selected is 'Client (Infrastructure)'.

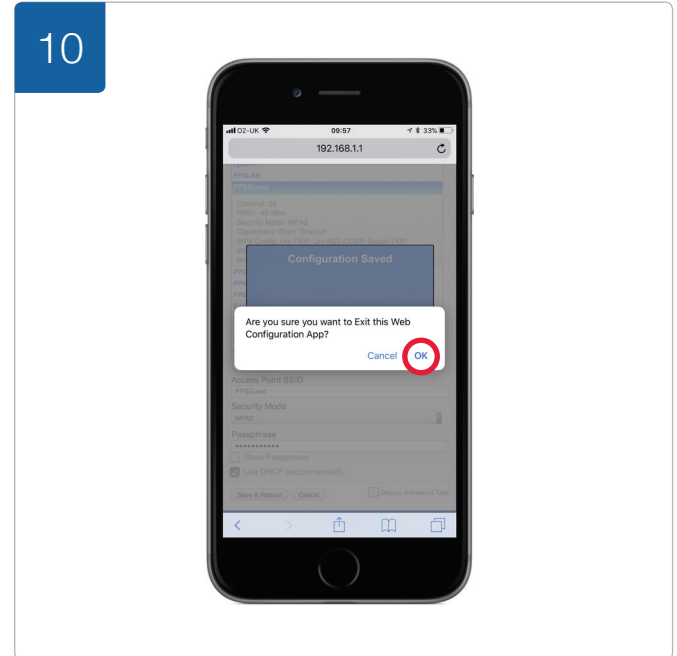


Click 'Refresh List' to find all available Wi-Fi networks in your area. The AlertMaxx2 will show a 'C5'.

ALERTMAXX2 WI-FI CONNECTION GUIDE



Select your Wi-Fi network name from the list provided and enter the password associated with that network. Click 'Save & Reboot'.



In some cases your web browser may ask for permission to leave the app. Click 'OK'.



The AlertMaxx2 will now display 'CC' to indicate the configuration has been successful.



The AlertMaxx2 will flash the blue LED to indicate transmission of data and no code will be displayed on the screen.